

## E-Z-GO RXV IRON MAID INSTALLATION INSTRUCTIONS

### E-Z-GO RXV

**Step 1:** Assemble cleaner to bracket with 4 screws provided (T-20 Torx), torque to 15 inch-pounds.

**Step 2:** Cut template out from provided sheet and tape in place.

**Step 3:** Drill 1/4" holes following the supplied template.

**Step 4:** Remove template.

**Step 5:** Position bracket per template and install bracket with three M6 bolts, nuts and washers, torque nuts to 35 inch-pounds.

Step 1



Step 4



Step 2 & 3



Step 5

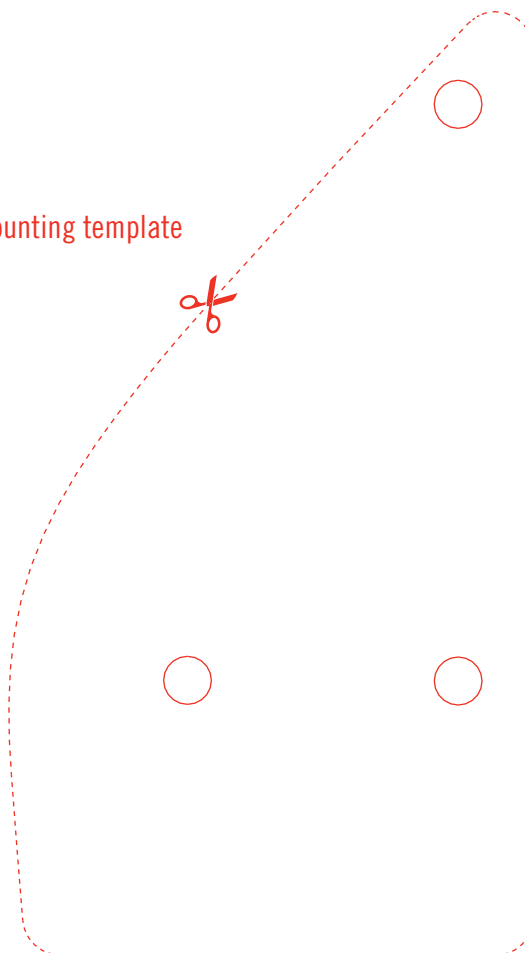


Rubber "tongues" minimize splashing



Side window shows fluid level

Mounting template



Please call us with any questions pertaining to these instructions or any repair maintenance of the product  
1-800-467-2844



[www.clubpro.com](http://www.clubpro.com)

800.467.2844 info@clubpro.com

AUGUSTA, GA | DEER PARK, NY | DETROIT, MI | LOUISVILLE, KY | SANTIAGO D.R.